

DILAN PP

HB-Nr. 609110 • 756120179302377

21.07.2023 aAa: 423 Beta casein: A2A2 Kappa casein: AB ZW: gen.CH 4.2026 Breeder: M. Wallimann, CH

Pedigree

LEON PP v. FILOMEN P
DUBAI P GP-84
1. 305 8.831 4,56 3,59

O'MALLEY v. BENDER
DOREN P EX-94 EX-97 Euter
3. 305 8.228 3,82 3,71

VICTOR P
DIVA EX-94 EX-97 Euter

Total index

GZW 1119

Production

Si. 87%

MW 106

Milk	-21		
Fat %	+0,27	Protein %	+0,27
Fat kg	+18	Protein kg	+6

Functional traits

Persistency	103
Somatic Cell Score	108
Mastitis resistance	94
Milking Speed	102
Fertility Daughters	105
Productive Life	106
Calving Ease	112
Calving Ease Daughters	104

Exterieur

111

Frame	112
Rump	105
Feet & Legs	110
Udder	113

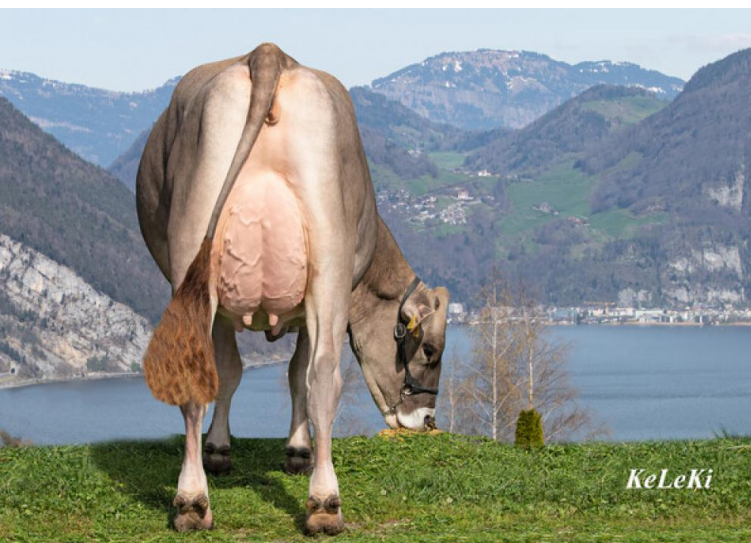
Dilan PP is a son of Leon PP, whose dam is a high-yielding full sister of the proven sire Valentin and thus traces back to the cow family of the national champion cow Vinozak Diva EX-95. In Dilan PP's dam line, his young O'Malley dam is followed by six generations of EX cows. Dilan PP's breeding profile shows him to be a solid performance sire with high fat and positive protein content (plus beta-casein A2/AA2), who impresses with his excellently balanced conformation and high fitness scores. Easy calving with good values for the maternal calving process also make Dilan PP a sought-after bull for heifer insemination.



Dilan PP

Linear

Merkmal	ZW	Tendenz	88	112	124	Tendenz
Stature	109	small				tall
Body Depth	108	shallow				deep
Chest Width	106	narrow				wide
Topline	108	weak				hunched
Rump Length	119	short				long
Pin Width	105	narrow				wide
Rump Angle	89	high				low
Thurl Position	97	In the back				In the front
Rear Leg Side View	101	straight				curved
Hock Quality	106	coarse				flat
Pastern	132	weak				steep
Heel Depth	117	shallow				deep
Fore Udder Length	102	little				much
Fore Udder Attachment	120	weak				strong
Rear Udder Width	97	narrow				wide
Rear Udder Height	113	low				high
Udder Depth	122	deep				shallow
Udder Floor	114	low rear				high rear
Median Suspensory	78	weak				strong
Teat Length	93	short				long
Teat Thickness	113	fine				coarse
Teat Direction	113	oblique				inward
Fore Teat Placement	107	wide				narrow
Rear Teat Placement	103	wide				narrow
Muscularity	98	weak				strong



KeLeKi

MM: Taddei Top TI Victor-P Doren-P EX-94 EX-97 Euter