

HIRTSTEIN

HB-Nr. 607088 • 203000205521064

04.12.2022 aAa: - Beta casein: A2A2 Kappa casein: AB ZW: gZW 04.2026 Breeder: CZ

Pedigree

HIROTO v. HERMELIN
NOVA

EDELSTEIN v. ETOSCHA
NOVOLUNI
HL4 13.734 3,39 465 3,46 475

WILLE
54961

Total index

Si. 81%

GZW 136

Production

MW 127

Milk	+1127		
Fat %	-0,06	Protein %	-0,05
Fat kg	+42	Protein kg	+35

Fitness

ÖZW 131

FIT 112

ND	Longevity	115
VIW	Vitality	107
EGW	Udder Health	112
ZZ	Somatic cell score	110
MAS	Mastitis	111
PER	Persistency	95
FRW	Fertility Value	104
MBK	Milking Speed	122
KVP	Calving ease pat.	98
KVM	Calving ease mat.	105

Meat

FW 108

NTZ	Daily net gain	103
AUS	Carcass percentage	111
HKL	Carcass grade	102

Exterieur

RA	Frame	103
BM	Muscling	101
FU	Feet & Legs	113
EU	Udder	113

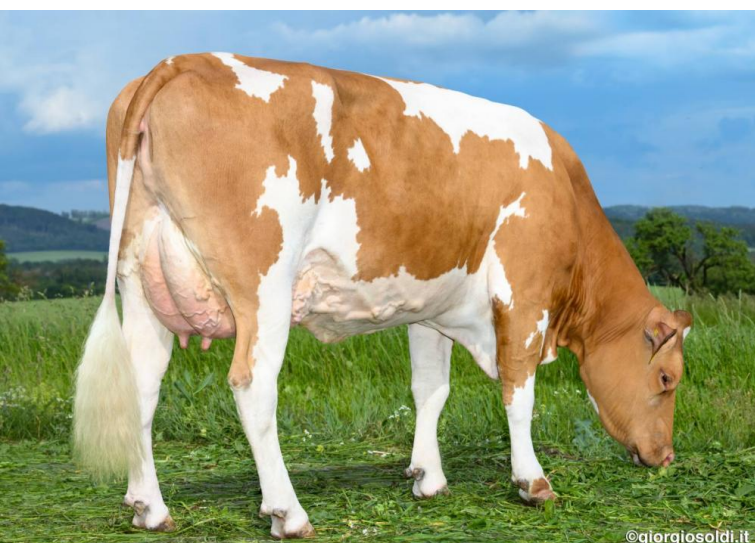


Hirtstein

Hirtstein is the No. 1 Fleckvieh sire from the Czech Republic and comes from a very productive cow family. Hirtstein himself has continued to improve over time and impresses with his outstanding production inheritance, high beef values with very good weight gains and high culling as well as very good fitness values with high longevity, good fertility and very easy milkability with good milking behavior. In terms of conformation, Hirtstein convinces with good feet & legs and udder inheritance.

Linear

Merkmal	ZW	Tendenz	88	112	124	Tendenz
Height at cross	106	small				large
Body length	102	short				long
Rump width	99	schmal				wide
Body depth	94	shallow				deep
Rump angle	98	ascending				sloped
Hock angularity	94	straight				sickled
Hock develop.	116	swollen				dry
Pasterns	102	weak				steep angles
Foot angle	100	low angles				high
Fore udder lenght	95	short				long
Rear udder lenght	102	short				long
Fore udder att.	103	loose				tight
Susp. ligament	112	weak				strong
Udder depth	119	deep				high
Teat lenght	101	short				long
Teat thickness	99	thin				thick
Teat placement front	92	wide				close
Teat placement rear	97	wide				close
Teat direction rear	104	ouwards				inwards
Udder cleanness	102	add. teats				clean udder



©giorgiosoldi.it

Mutter: Nova