

# EMIR P RED Tö.

HB-Nr. 499076 • 276000358561165

27.05.2016 aAa: 234 Beta casein: A1/A1 Kappa casein: AB ZW: gen.ZW 04.2026 Breeder: Hanne-Sustrath GbR

## Pedigree

ELOPED RED v. SYMPATICO  
AMBER EX-90

MOGUL v. DORCY  
AVATAR EX-91

LAWNBOY P  
ADELE EX-90

LL5La:60.000kgM 4,44F 3,56E

**Total index** **RZ€ -267** **RZG 99**

**Production** **Si. 91%** **RZM 89**

Milk	-421		
Fat %	+0,03	Protein %	-0,08
Fat kg	-14	Protein kg	-22

## Functionality

RZN	Productive Life	103
RZS	Somatic cell score	88
RZR	Daughter Pregnancy Rate	100
RZPersistenz	Persistenz	109
RZD	Milking Speed	107
KVd	Sire calving ease	98
RZKm	Daughter calving ease	109
RZOeko	Ecological Index	101
RZFE1	Feed Efficiency	96
RZRobot	RZRobot	106

## Health

**RZGesund 105**

RZEuterfit	Udder health	97
RZKlauen	Claw health	111
RZRepro	Fertility	104
RZMetabol	Metabolic stability	104
DDcontrol	DDcontrol	119
RZKälberfit	Calves fitness	100

## Exterieur

**RZE 108**

Dairy Character	92
Body Composite	95
Feet & Legs	96
Udder	119

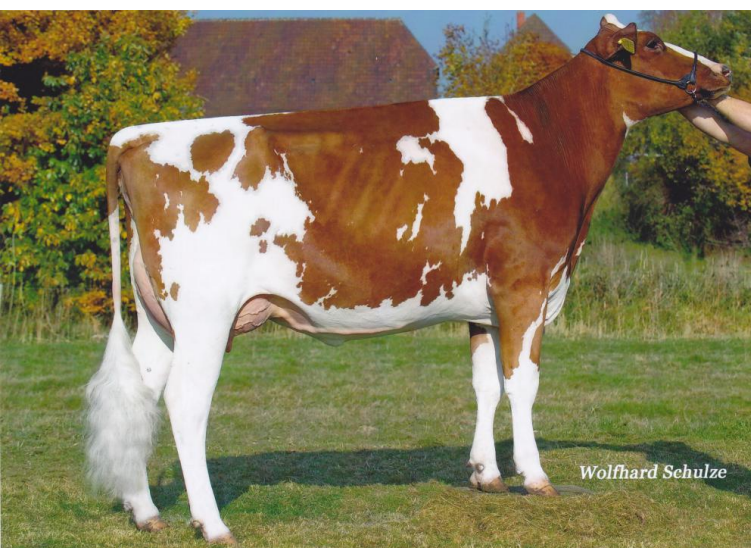


HHF Emir P Red

Emir P Red comes from an excellent cow family, which impresses with high lifetime production (M: >60,000kg, GM: >120,000kg, UGM: 98,000kg, each with very good components) and excellent classifications over generations. Emir P Red is NOT out of ET and transmits good production and excellent fitness values with good milkability. In terms of conformation, Emir convinces with good feet and legs and excellent udder transmission. With 125 udder index he is still one of the highest red, polled sires. He is also very well suited for AMS farms (RZRobot 107), can be used with heifers and also convinces with health values. Emir is not from ET.

## Linear

Merkmal	ZW	Tendenz	88	112	124	Tendenz
Stature	96	small				tall
Rip structure	99	tight rib				open rib
Body depth	90	shallow				deep
Strength	100	frail				strong
Rump angle	88	high pins				sloped
Thurl width	98	narrow				wide
Rear legs side view	96	posty				sickled
Foot angle	94	flat				steep
Hock quality	95	coarse				dry
Rear legs rear view	97	hocked in				parallel
Front feet orientation	112	hocked in				parallel
Locomotion	100	poor				good
Rear udder height	113	deep				high
Udder cleft	87	weak				strong
Front teat placement	111	wide				close
Rear teat placement	89	wide				close
Fore udder attachment	115	loose				strong
Udder balance	116	ht				vt
Udder depth	121	deep				high
Teat length	118	short				long



GM: HHF Avatar P Red EX-91