

MUSICAL PP RED

HB-Nr. 499340 • 276000365457502

12.02.2024 aAa: 234 Beta casein: A1A2 Kappa casein: BE ZW: gen.ZW 08.2025 Breeder: Schlösser

Pedigree

MO RED PP v. MCDONALD P
RED ROXY P

CARTOON P v. ALTATOP RED
SAMBUCA VG-85

ALTAC RED
SMP 6330 VG-87

Total index **RZ€ 2491** **RZG 149**

Production **Si. 78%** **RZM 135**

Milk	+939		
Fat %	+0,62	Protein %	+0,13
Fat kg	+102	Protein kg	+46

Functionality

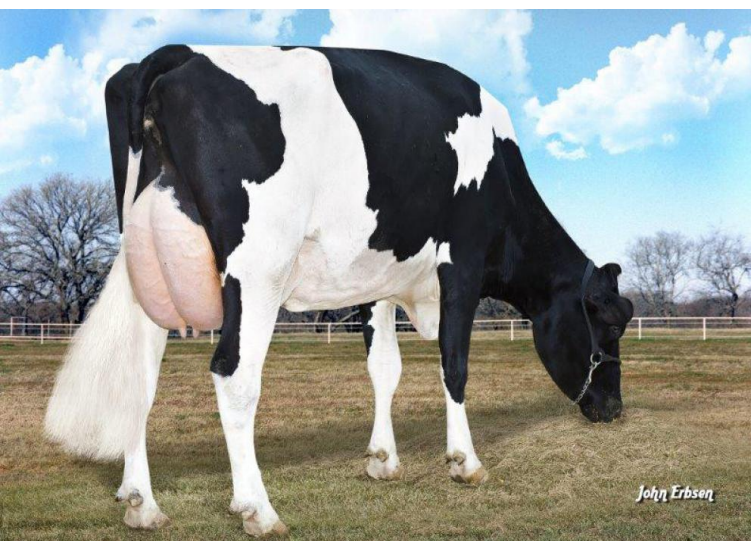
RZN	Productive Life	124
RZS	Somatic cell score	111
RZR	Daughter Pregnancy Rate	113
RZPersistenz	Persistenz	106
RZD	Milking Speed	108
KVd	Sire calving ease	110
RZKm	Daughter calving ease	115
RZOeko	Ecological Index	140
RZFE1	Feed Efficiency	93

Health **RZGesund 121**

RZEuterfit	Udder health	113
RZKlauen	Claw health	114
RZRepro	Fertility	111
RZMetabol	Metabolic stability	107
DDcontrol	DDcontrol	118
RZKälberfit	Calves fitness	111

Exterieur **RZE 122**

Dairy Character	127
Body Composite	106
Feet & Legs	105
Udder	116



6 M: Morningview Super Roxy EX-90



Musical PP Red

Musical PP Red from the Schlösser breeding farm plays a special role among the highest PP sires in the country, as Solitair P and his sons are not represented in his pedigree and he can therefore be mated very well to the corresponding daughters. Musical's great-granddam is the outstanding Simplicity daughter Morningview SMP 6330 VG-87, who goes back to the Roxy family and produced almost 1,500 R+D kg in her 3rd lactation (19,201 4.60 884 3.11 598).

Musical PP himself offers an excellent complete package with good production with high components, very good fitness values with high daughter fertility, good cell values with positive milkability as well as consistently good health values with very good calf fitness. In addition, Musical convinces with excellent conformation with a lot of body depth, wide, sloping rumps and very good feet&legs and udder inheritance. Musical can be used well for heifer inseminations and also convinces with very good maternal calving traits.

Linear

Merkmal	ZW	Tendenz	88	112	124	Tendenz
Stature	125	small				tall
Rip structure	115	tight rib				open rib
Body depth	107	shallow				deep
Strength	101	frail				strong
Rump angle	101	high pins				sloped
Thurl width	105	narrow				wide
Rear legs side view	96	posty				sickled
Foot angle	108	flat				steep
Hock quality	96	coarse				dry
Rear legs rear view	108	hocked in				parallel
Front feet orientation	84	hocked in				parallel
Locomotion	102	poor				good
Rear udder height	117	deep				high
Udder cleft	106	weak				strong
Front teat placement	106	wide				close
Rear teat placement	113	wide				close
Fore udder attachment	110	loose				strong
Udder balance	104	ht				vt
Udder depth	114	deep				high
Teat length	96	short				long