

# MADMAN

HB-Nr. 889665 • HO840003204327042

07.02.2021 aAa: 432 Beta casein: A2A2 Kappa casein: AB ZW: gen.US 12.2025 Breeder: WET, US

## Pedigree

FANECA v. ST LUCIA

MELANIA GP-84

1. 11.784 4,7 550 3,5 414

RENEGADE v. JALTAOAK

MARGIE VG-86

1. 14.257 5,0 717 3,7 524

MATTERS

MAUD VG-85

## Total index

TPI 3037

### Production

Si. 84%

NM 473

|               |       |
|---------------|-------|
| Milk          | +750  |
| Fat %         | +0,11 |
| Fat yield     | +61   |
| Protein %     | -0,01 |
| Protein yield | +23   |

### Functionality

|     |                         |      |
|-----|-------------------------|------|
| SCS | Somatic cell score      | 2.75 |
| PL  | Productive Life         | 2.50 |
| DPR | Daughter Pregnancy Rate | 0.10 |
| MS  | Melkbarkeit             | 7.0  |
| SCE | Sire calving ease       | 1.8% |
| DCE | Daughter calving ease   | 1.1% |

### Health

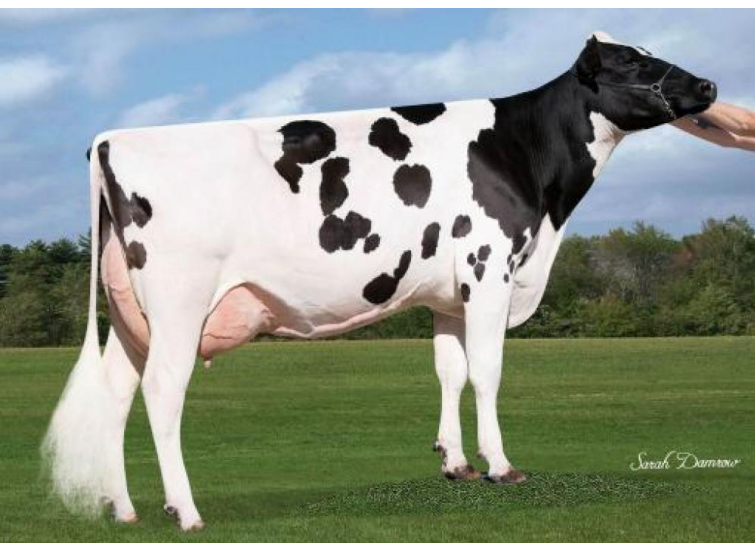
4.9

|                |     |
|----------------|-----|
| Mastitis       | 2.7 |
| Ketosis        | 0   |
| Metritis       | 0.7 |
| Disp. Abomasum | 0   |
| Ret. Placenta  | 0.1 |

### Exterieur

PTAT 1.08

|     |                 |      |
|-----|-----------------|------|
| DC  | Dairy Character | 0.28 |
| BC  | Body Composite  | 0.38 |
| F&L | Feet & Legs     | 1.02 |
| UDC | Udder           | 0.80 |



GGM: Wet Hotshot MAUD VG-85



WET Madman

MADMAN is a son of Faneca and comes from the Rud Zip/Robust Delicious cow family on his mother's side, which has produced countless successful insemination bulls. The different pedigree and the excellent inheritance profile make Madman doubly interesting. He impresses with very good milk production with positive components - a trademark of the mother's line. Very low somatic cell counts, beta-casein A2/A2 and consistently positive values in all fitness areas are impressive, as is the almost perfect linear profile. Wide, slightly sloping pelvises, slightly angled, completely parallel hind legs, a lot of dairy strength and very well attached udders with a strong central ligament mean that excellent freestall cows can be expected. Sire calving ease is average and the maternal calving process is rated very favorably.

### Linear

|                       | ZW    | -2        | 2        |
|-----------------------|-------|-----------|----------|
| Stature               | 1.35  | small     | tall     |
| Dairy character       | 0.66  | tight rib | open rib |
| Body depth            | 0.14  | shallow   | deep     |
| Strength              | 0.3   | frail     | strong   |
| Rump angle            | 1.67  | high pins | sloped   |
| Thurl width           | 0.92  | narrow    | wide     |
| Rear legs side view   | 0.76  | posty     | sickled  |
| Foot angle            | 0.94  | flat      | steep    |
| Rear legs rear view   | 1.59  | hocked in | parallel |
| Rear udder height     | 0.98  | deep      | high     |
| Udder cleft           | 0.64  | weak      | strong   |
| Front teat placement  | 0.96  | wide      | close    |
| Rear teat placement   | 0.76  | wide      | close    |
| Fore udder attachment | 0.8   | loose     | strong   |
| Udder depth           | 1.29  | deep      | high     |
| Teat length           | -0.32 | short     | long     |